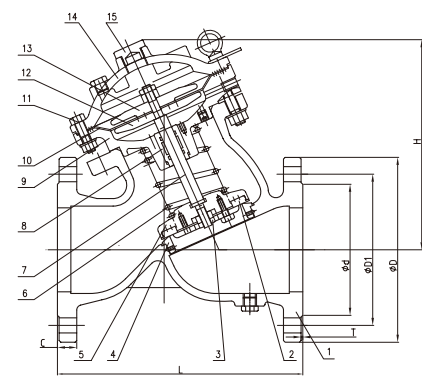


Deluge Alarm Valve (SK790X)



SK790X

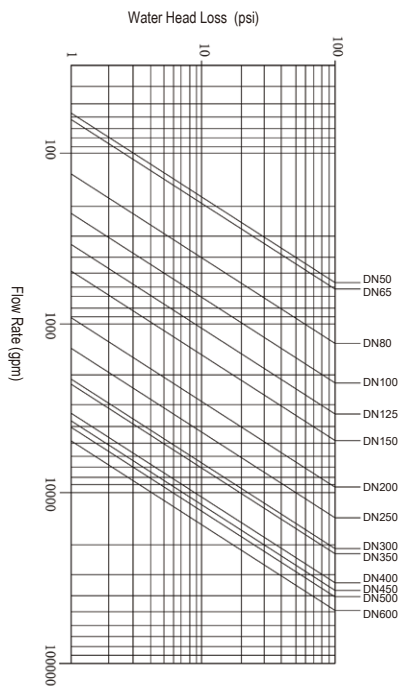
- Connection Ends: ASME B16.1 CL 125
- Working Pressure: 300PSI
200PSI and 250PSI available upon request
- Temperature Range: 0°C - 80°C
- Coating: Fusion Bonded Epoxy Coating in accordance with ANSI/AWWA C550
- Statement: SK790X Deluge Alarm Valve is a diaphragm type of hydraulic control valve driven by the hydraulic pressure within the piping system, functioning as flow control and alarming device in the sprinkler and pre-action system, i.e. to start the sprinkler system for quenching of the fire and send out fire alarm through the fire bell when there is fire detected.



MATERIAL SPECIFICATION

Part No.	Part	Standard Specification
1	Valve Body	ASTM A536, 65-45-12
2	Main Gasket	EPDM
3	Gland of Main Disc	ASTM A536, 65-45-12
4	Seat	AISI 304
5	Main Disc	ASTM A536, 65-45-12
6	Spring	Stainless Steel 4Cr13
7	Stem	AISI 304
8	Bushing	Brass H62
9	Middle Bonnet	ASTM A536, 65-45-12
10	Diaphragm	EPDM
11	Bolt	AISI 304
12	Up Gland	ASTM A536, 65-45-12
13	Bottom Gland	ASTM A536, 65-45-12
14	Up Bonnet	ASTM A536, 65-45-12
15	Cap Plug	Brass H62

Note: For special material request other than standard specification, please indicate clearly on the inquiry or order list.



DN	50	65	80	100	125	150	200	250	300	350	400	450	500	600
Kv	41	53	105	175	285	402	730	1160	1400	1770	3010	3225	3395	4272

DN		Dimensions(mm)					
Inch	mm	L	H	D	D1	b	n-ΦL
2"	50	206	170	152	120.5	16	4-Φ19.1
2.5"	65	211	195	178	139.5	17.5	4-Φ19.1
3"	80	249	215	191	152.5	19	4-Φ19.1
4"	100	320	255	229	190.5	24	8-Φ19.1
6"	150	414	360	279	241.5	25.5	8-Φ22.2
8"	200	500	450	343	298.5	28.5	8-Φ22.2
10"	250	605	550	406	362	30.5	12-Φ25.4
12"	300	724	645	483	432	32	12-Φ25.4
14"	350	734	700	533	476	35	12-Φ28.5
16"	400	991	790	597	540	36.5	16-Φ28.5