

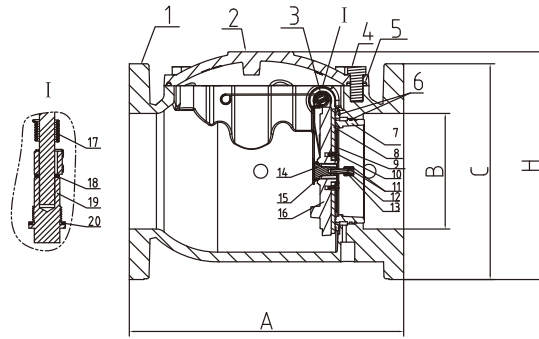
Flanged Wet Alarm Valve (ZSFZ4X)



ZSFZ4X

- Connection Ends: ASME B16.1 CL 125
- Working Pressure: 300PSI
200PSI and 250PSI available upon request
- Temperature Range: 0°C - 80°C
- Coating: Painting
- Statement: The alarm check valve works as a check valve by preventing the reverse flow of water from the system piping to the water supply. The valve is trimmed with a water bypass line, which has an in-line swing check valve. The bypass line allows pressure surges to enter the system and to be trapped above the alarm check valve's clapper without the clapper lifting and causing false alarms.

When a significant flow of water occurs, such as from an open sprinkler, the alarm valve's clapper lifts and allows water to enter the system. Simultaneously, water enters an intermediate chamber, which allows the water to activate an alarm either through a water motor alarm or through a water pressure alarm. These alarms continue to sound until the flow of water is stopped.

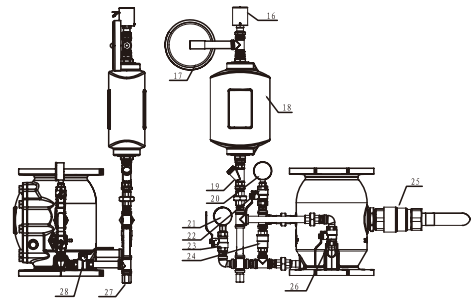
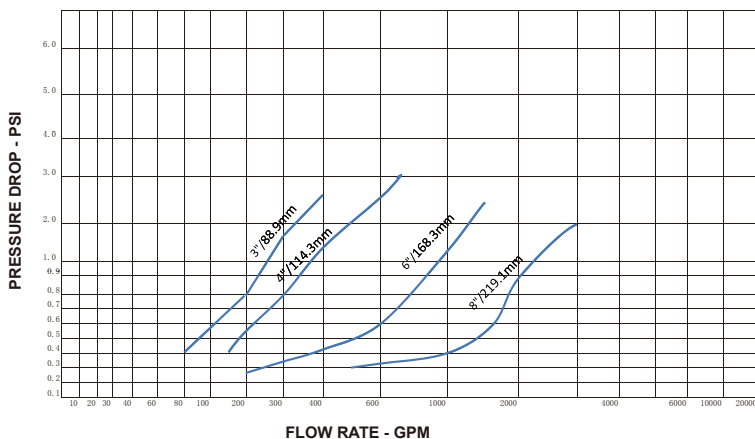


MATERIAL SPECIFICATION

Part No.	Part	Standard Specification	Options
1	Valve Body	EN GJS-450-10	
2	Bonnet	EN GJS-450-10	
3	Pin	AISI 304	AISI 316
4	Hex Bolt	Carbon Steel Zinc Plated	
5	Gasket	EPDM	
6	O-Ring	NBR	
7	Seat	C83600	
8	Gasket	EPDM	
9	Plate	H62	
10	Slotted Screw	NBR	EPDM
11	Hex Nut	EPDM	
12	Adjustment Screw	AISI 304	AISI 316
13	Card Board	H62	AISI 316
14	Compensator	H62	
15	O-Ring	NBR	
16	Disc	H62	
17	Spring	1Cr18Ni9Ti	
18	Plug Gasket	PTFE	
19	Plug	AISI 304	AISI 316
20	Plug Gasket	PTFE	

Note: For special material request other than standard specification, please indicate clearly on the inquiry or order list.

DN			Dimensions(mm)			
Inch	DN	mm	A	B	C	H
3"	80	80	241	80	191	235
4"	100	100	292	100	229	230
6"	150	150	356	150	279	298
8"	200	200	495	200	343	352



External accessories			
Part No.	Part	Part No.	Part
16	Pressure Switch	23	Ball Valve
17	Alarm	24	Check Valve
18	Decelerator	25	Ball Valve
19	Strainer	26	Ball Valve
20	Pressure Gauge	27	Water Valve
21	Pressure Gauge	28	Ball Valve
22	Ball Valve		